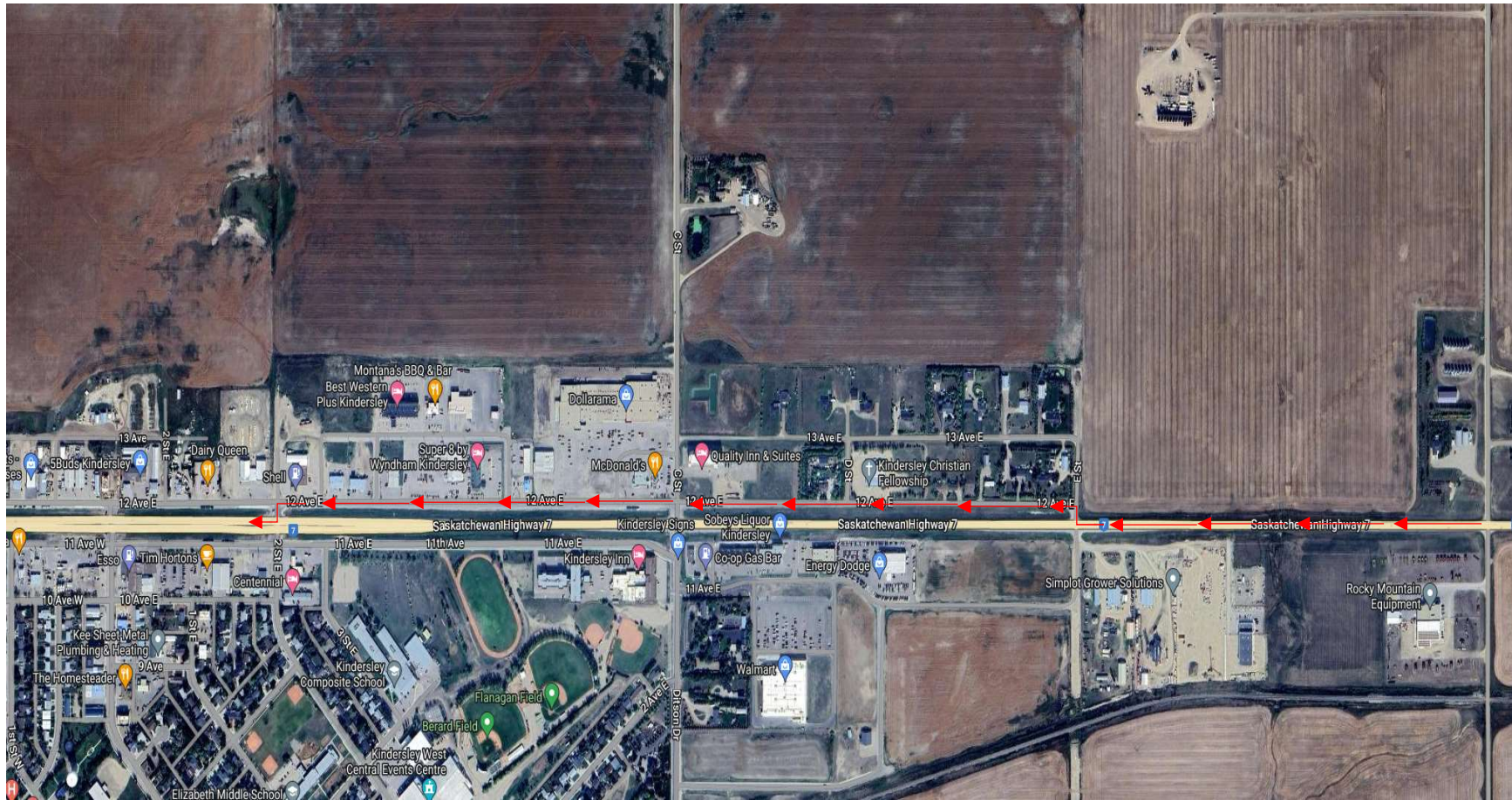


Hwy 7 & Ditson Drive



- Only West-bound lane will be redirected to 12th Avenue service road. Signs and flagpersons will be present to direct traffic
- Intersection of Ditson Drive will still be open for traffic crossing Hwy 7
- East-bound traffic will not be disturbed
- Road closure will take effect from May to end of June, weather dependent
- Changes may be necessary depending on traffic volumes

