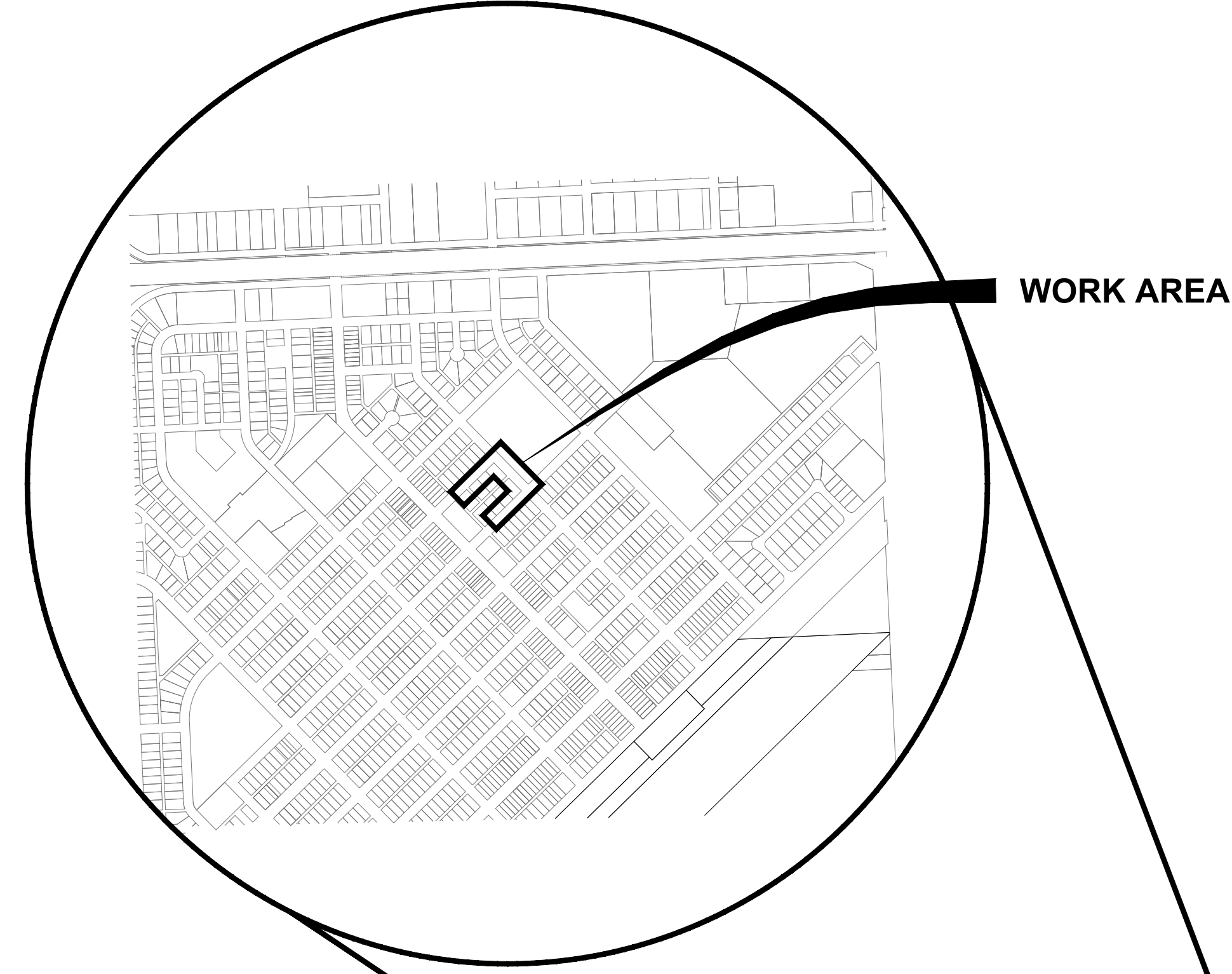
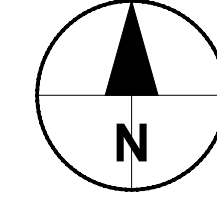
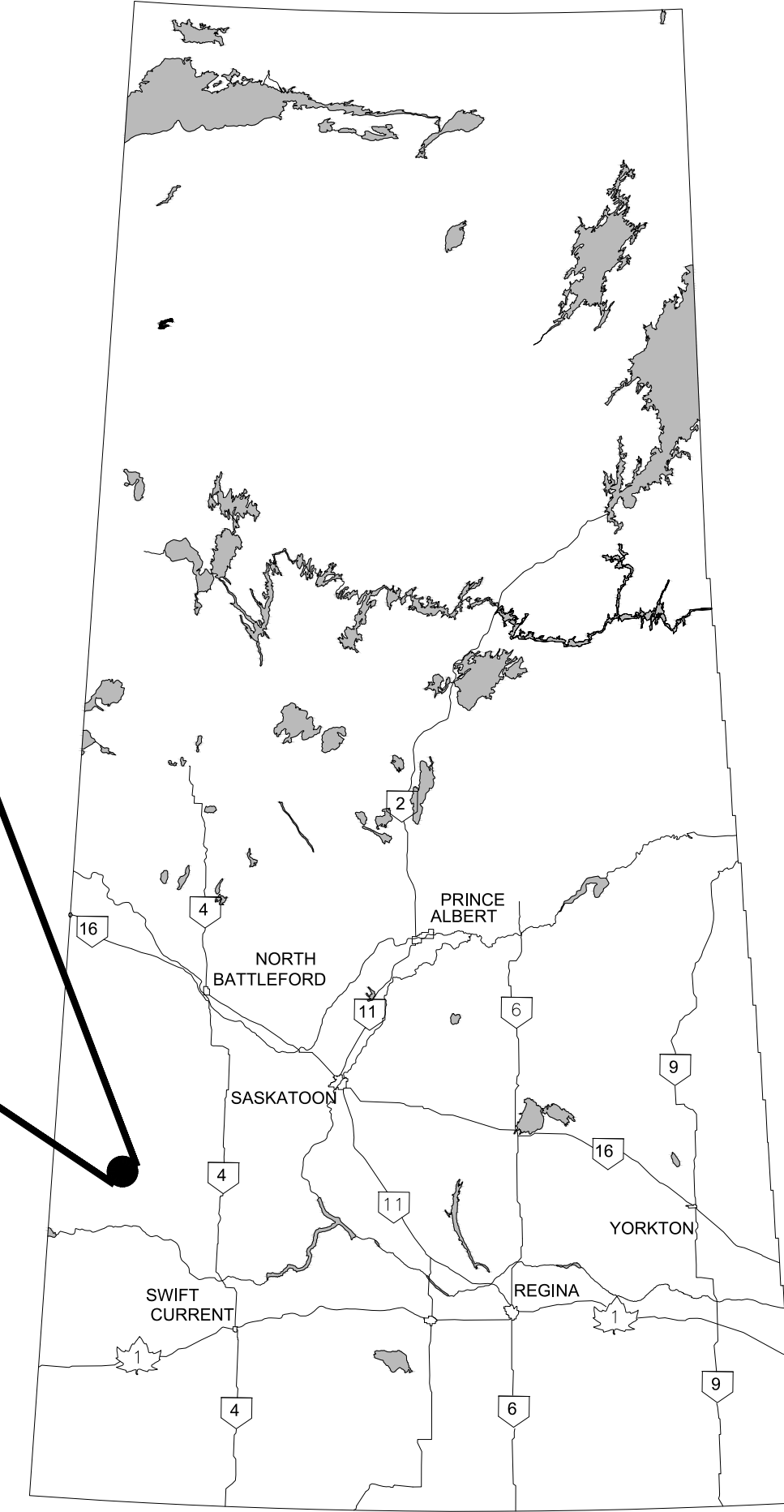




TOWN OF KINDERSLEY



SASKATCHEWAN

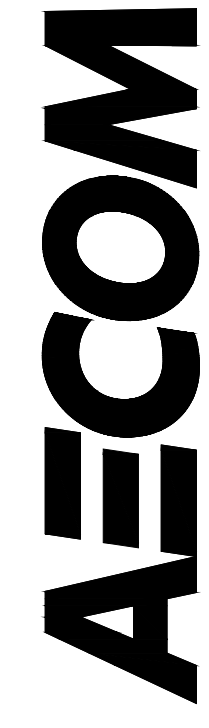


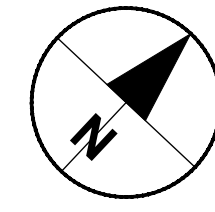
KEY MAP

LIST OF PROJECT DRAWINGS

09-G-000	Cover Sheet
09-C-100	Site Plan
09-C-101	Site Plan
09-C-300	Plan/Profile - 6th Ave East
09-C-301	Plan - 5th Ave East/ 1st Street East
09-C-400	Details

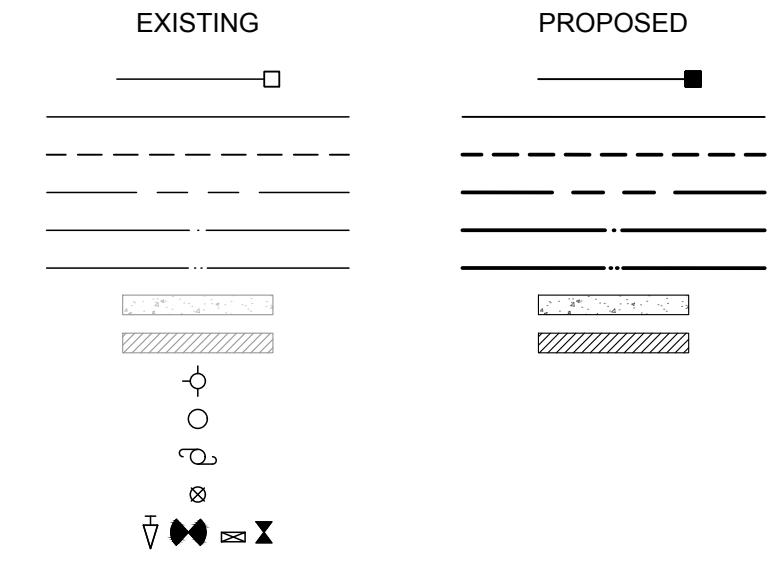
Town of Kindersley Local Curb, Gutter, and Sidewalk Works



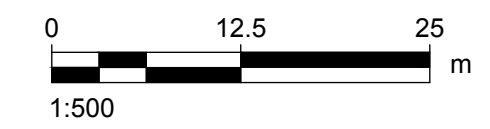


LEGEND

- CATCH BASIN AND LEAD
- LIP OF GUTTER
- CURB
- STORM SEWER
- SANITARY SEWER
- WATER MAIN
- SIDEWALK
- APRON
- HYDRANT
- MANHOLE
- POWER POLE
- GAS METER
- WATERMAIN FITTINGS



SITE PLAN
Scale 1:200



PROJECT
Local Curb, Gutter,
and Sidewalk Works

CLIENT
Town Of Kindersley
106 - 5th Avenue East
Kindersley, SK
S0L 1S0

CONSULTANT
AECOM
200-2100 8th Street East
Saskatoon, SK S7H 0V1
306.955.3300 tel 306.955.0044 fax
www.aecom.com

NOT FOR CONSTRUCTION

NOTICE:
THE EXISTENCE, LOCATION AND ELEVATION OF UTILITIES AND/OR CONCEALED STRUCTURES AT THE PROJECT SITE ARE NOT GUARANTEED BY AECOM CANADA LTD.

THE CONTRACTOR IS RESPONSIBLE FOR DETERMINING THE EXISTENCE, LOCATION AND ELEVATION OF ALL SUCH UTILITIES AND/OR STRUCTURES AND IS RESPONSIBLE FOR NOTIFYING THE APPROPRIATE COMPANY, DEPARTMENT OR PERSON(S) OF ITS INTENTION TO CARRY OUT ITS OPERATIONS.

REGISTRATION

ISSUE/REVISION

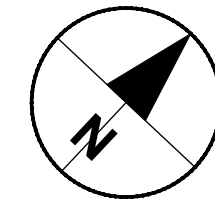
I/R	DATE	DESCRIPTION
B	2024-04-04	Issued For Bid
A	2023-11-02	Issued For Review

PROJECT NUMBER
60561867

SHEET TITLE
Site Plan
Existing Site Conditions

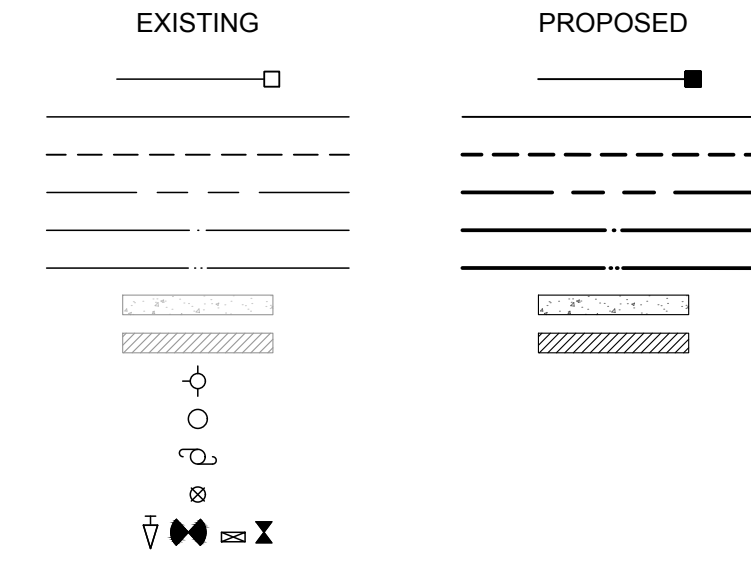
SHEET NUMBER
09-C-100

This drawing has been prepared for the use of AECOM's client and may not be used, reproduced or relied upon by third parties, except as agreed by AECOM and its client, as required by law or for use by governmental reviewing agencies. AECOM accepts no responsibility, and denies any liability whatsoever, to any party that modifies this drawing without AECOM's express written consent. Do not scale this document. All measurements must be obtained from stated dimensions.



LEGEND

- CATCH BASIN AND LEAD
- LIP OF GUTTER
- CURB
- STORM SEWER
- SANITARY SEWER
- WATER MAIN
- SIDEWALK
- APRON/DEPRESSED CURB
- HYDRANT
- MANHOLE
- POWER POLE
- GAS METER
- WATERMAIN FITTINGS



PROJECT

Local Curb, Gutter,
and Sidewalk Works

CLIENT

Town Of Kindersley

106 - 5th Avenue East
Kindersley, SK
S0L 1S0

CONSULTANT

AECOM
200-2100 8th Street East
Saskatoon, SK S7H 0V1
306.955.3300 tel 306.955.0044 fax
www.aecom.com

NOT FOR CONSTRUCTION

NOTICE:
THE EXISTENCE, LOCATION AND ELEVATION OF UTILITIES AND/OR CONCEALED STRUCTURES AT THE PROJECT SITE ARE NOT GUARANTEED BY AECOM CANADA LTD.
THE CONTRACTOR IS RESPONSIBLE FOR DETERMINING THE EXISTENCE, LOCATION AND ELEVATION OF ALL SUCH UTILITIES AND/OR STRUCTURES AND IS RESPONSIBLE FOR NOTIFYING THE APPROPRIATE COMPANY, DEPARTMENT OR PERSON(S) OF ITS INTENTION TO CARRY OUT ITS OPERATIONS.

REGISTRATION

ISSUE/REVISION

I/R	DATE	DESCRIPTION
B	2024-04-04	Issued For Bid
A	2023-11-02	Issued For Review

PROJECT NUMBER

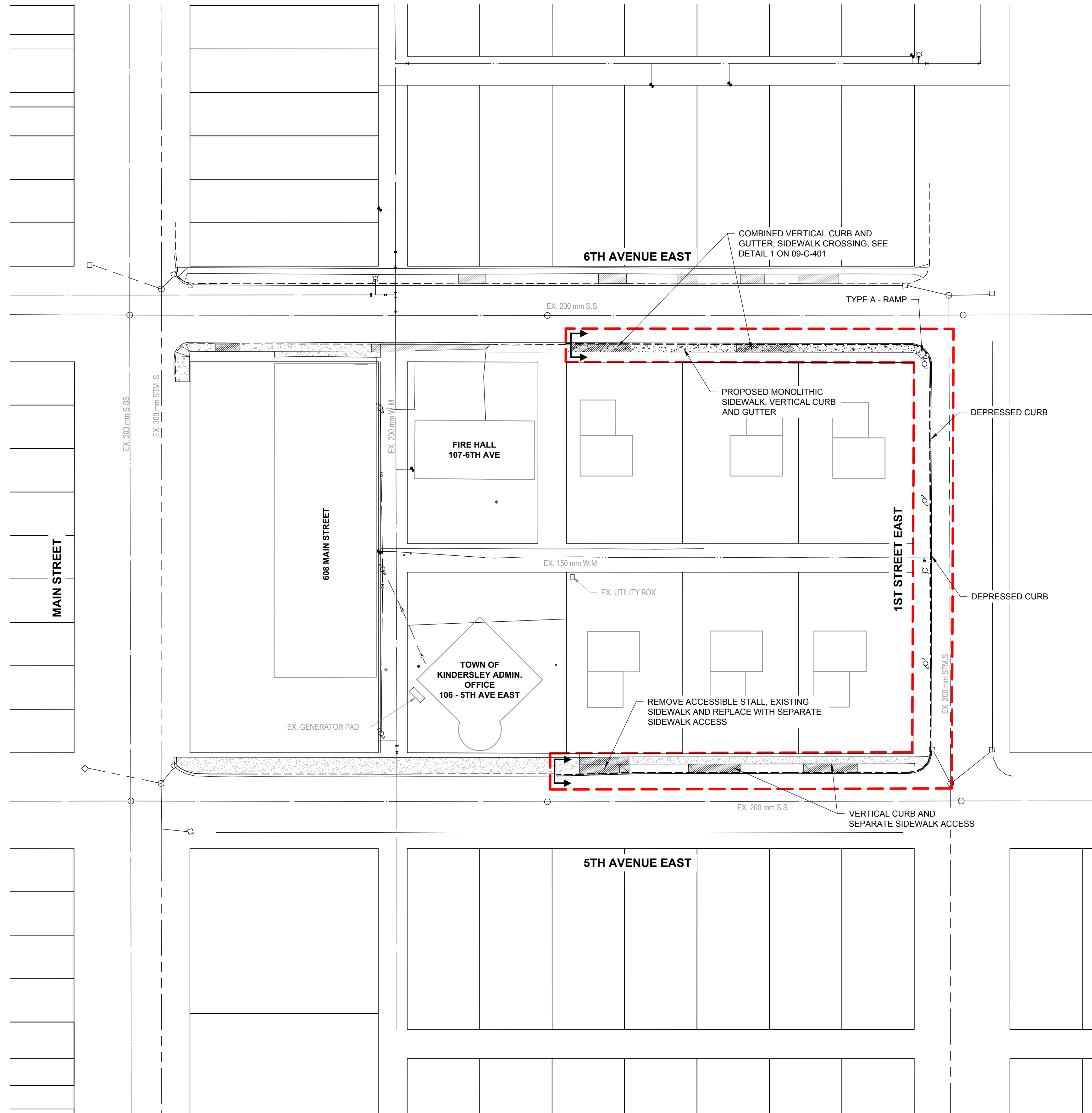
60561867

SHEET TITLE

Site Plan
Proposed Upgrades

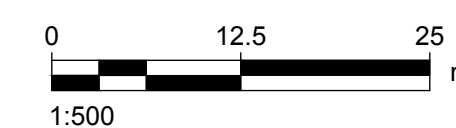
SHEET NUMBER

09-C-101

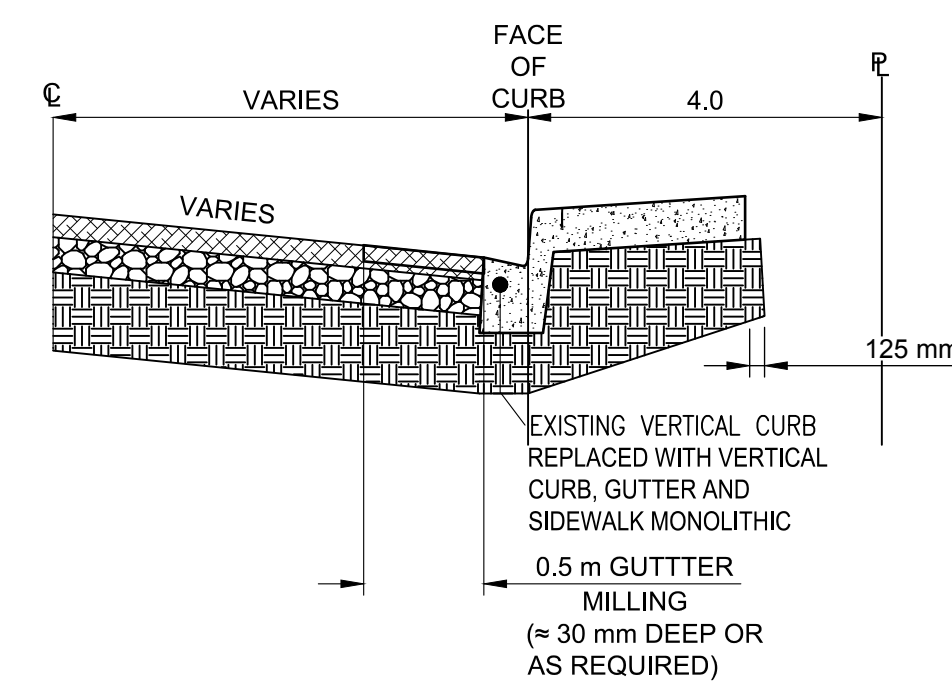
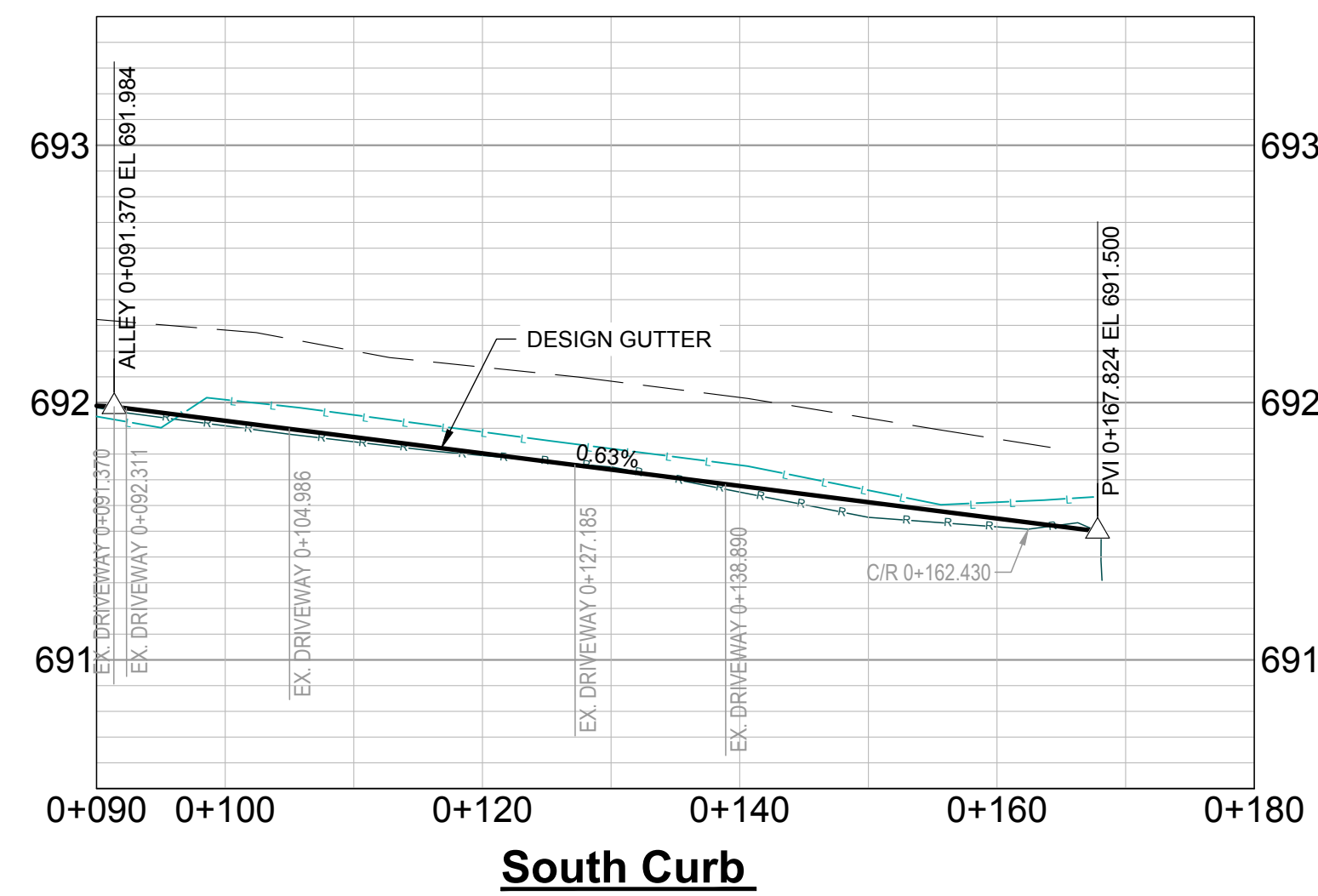
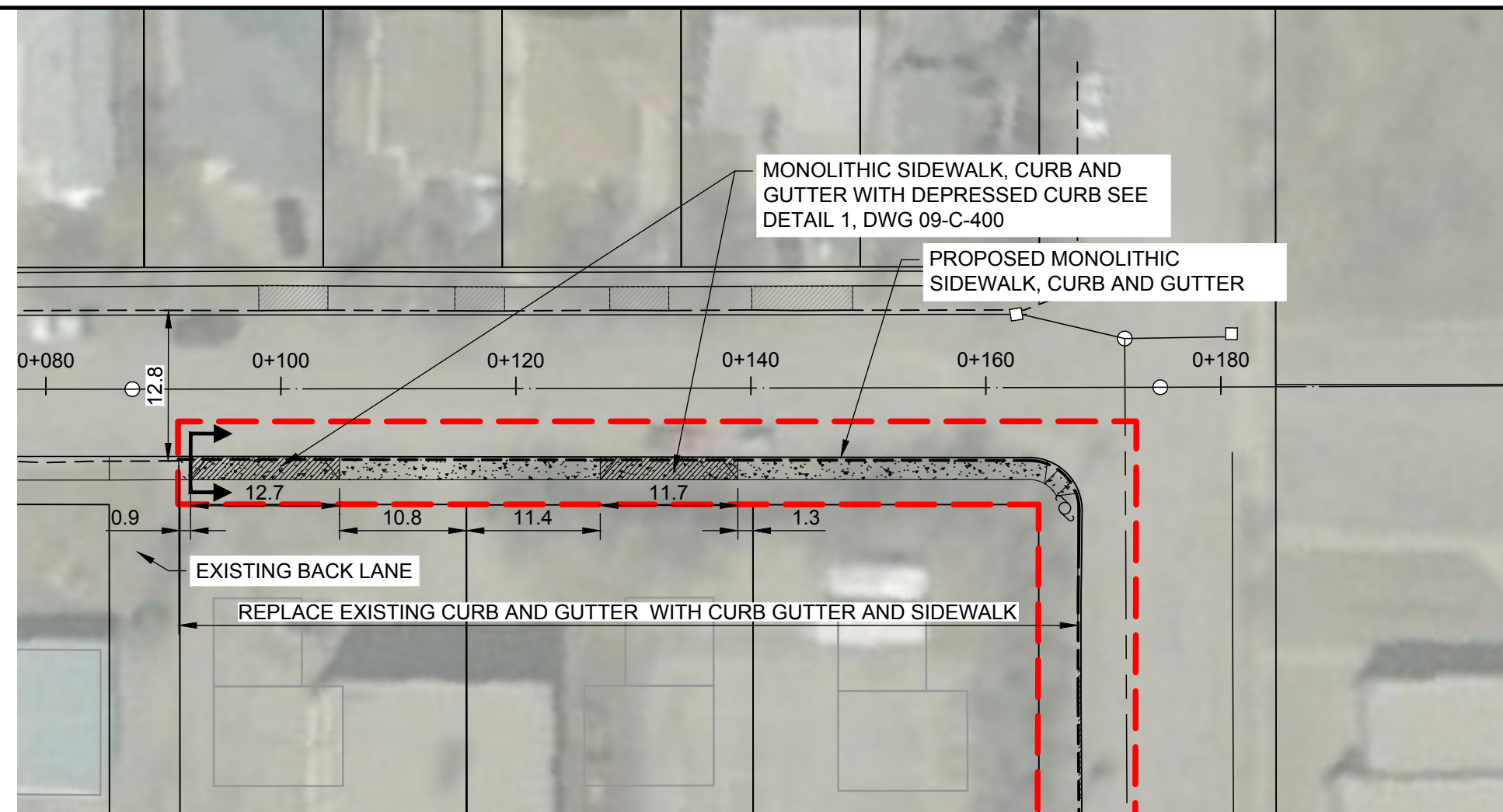


SITE PLAN

Scale 1:200

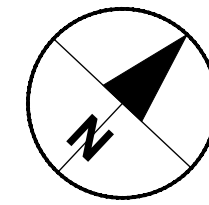


This drawing has been prepared for the use of AECOM's client and may not be used, reproduced or relied upon by third parties, except as agreed by AECOM and its client, as required by law or for use by governmental reviewing agencies. AECOM accepts no responsibility, and denies any liability whatsoever, to any party that modifies this drawing without AECOM's express written consent. Do not scale this document. All measurements must be obtained from stated dimensions.



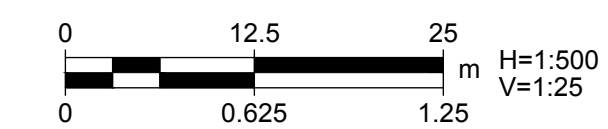
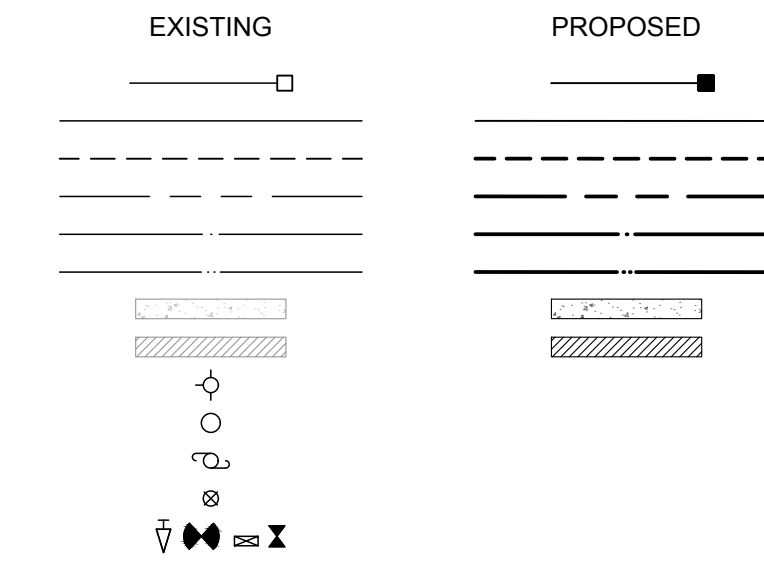
ROADWAY STRUCTURE (TYPICAL)

Scale: NTS



LEGEND

- CATCH BASIN AND LEAD
- LIP OF GUTTER
- CURB
- STORM SEWER
- SANITARY SEWER
- WATER MAIN
- SIDEWALK
- APRON
- HYDRANT
- MANHOLE
- POWER POLE
- GAS METER
- WATERMAIN FITTINGS



PROJECT

Local Curb, Gutter, and Sidewalk Works

CLIENT

Town Of Kindersley

106 - 5th Avenue East
 Kindersley, SK
 S0L 1S0

CONSULTANT

AECOM
 200-2100 8th Street East
 Saskatoon, SK S7H 0V1
 306.955.3300 tel 306.955.0044 fax
 www.aecom.com

NOT FOR CONSTRUCTION

NOTICE:
 THE EXISTENCE, LOCATION AND ELEVATION OF UTILITIES AND/OR CONCEALED STRUCTURES AT THE PROJECT SITE ARE NOT GUARANTEED BY AECOM CANADA LTD.
 THE CONTRACTOR IS RESPONSIBLE FOR DETERMINING THE EXISTENCE, LOCATION AND ELEVATION OF ALL SUCH UTILITIES AND/OR STRUCTURES AND IS RESPONSIBLE FOR NOTIFYING THE APPROPRIATE COMPANY, DEPARTMENT OR PERSON(S) OF ITS INTENTION TO CARRY OUT ITS OPERATIONS.

REGISTRATION

ISSUE/REVISION

I/R	DATE	DESCRIPTION
B	2024-04-04	Issued For Bid
A	2023-11-02	Issued For Review

PROJECT NUMBER

60561867

SHEET TITLE

6th Avenue East
 Plan/Profile

SHEET NUMBER

09-C-300

This drawing has been prepared for the use of AECOM's client and may not be used, reproduced or relied upon by third parties, except as agreed by AECOM and its client, as required by law or for use by governmental reviewing agencies. AECOM accepts no responsibility, and denies any liability whatsoever, to any party that modifies this drawing without AECOM's express written consent. Do not scale this document. All measurements must be obtained from stated dimensions.

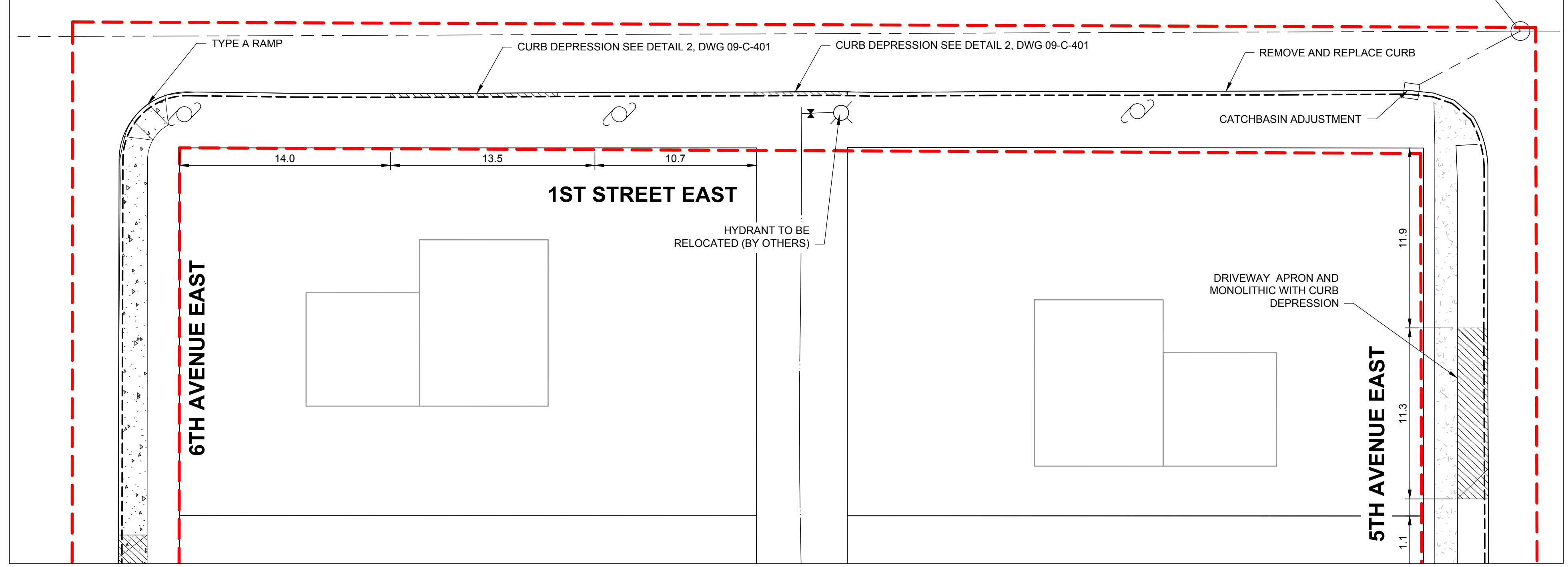
NOTICE:
 THE EXISTENCE, LOCATION AND ELEVATION OF UTILITIES AND/OR CONCEALED STRUCTURES AT THE PROJECT SITE ARE NOT GUARANTEED BY AECOM CANADA LTD.
 THE CONTRACTOR IS RESPONSIBLE FOR DETERMINING THE EXISTENCE, LOCATION AND ELEVATION OF ALL SUCH UTILITIES AND/OR STRUCTURES AND IS RESPONSIBLE FOR NOTIFYING THE APPROPRIATE COMPANY, DEPARTMENT OR PERSON(S) OF ITS INTENTION TO CARRY OUT ITS OPERATIONS.

I/R	DATE	DESCRIPTION
B	2024-04-04	Issued For Bid
A	2023-11-02	Issued For Review

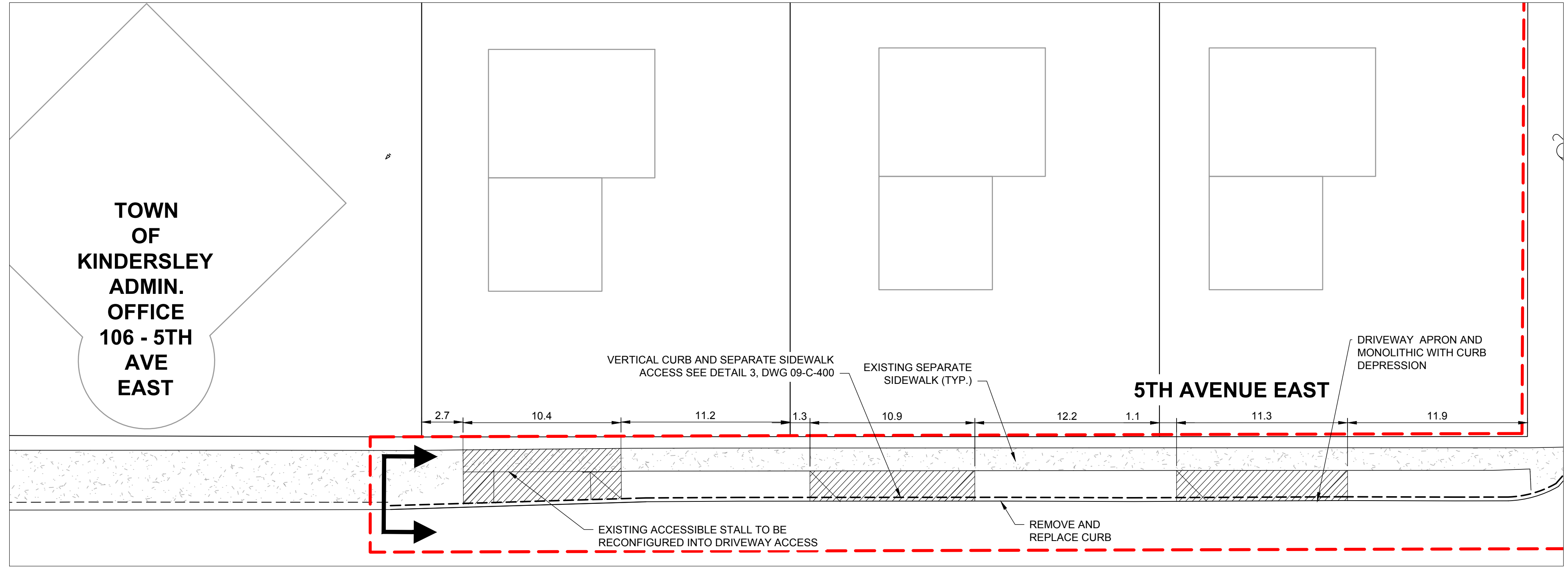
60561867

Plan
 5th Ave East/ 1st Street East

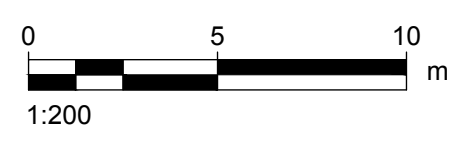
09-C-301



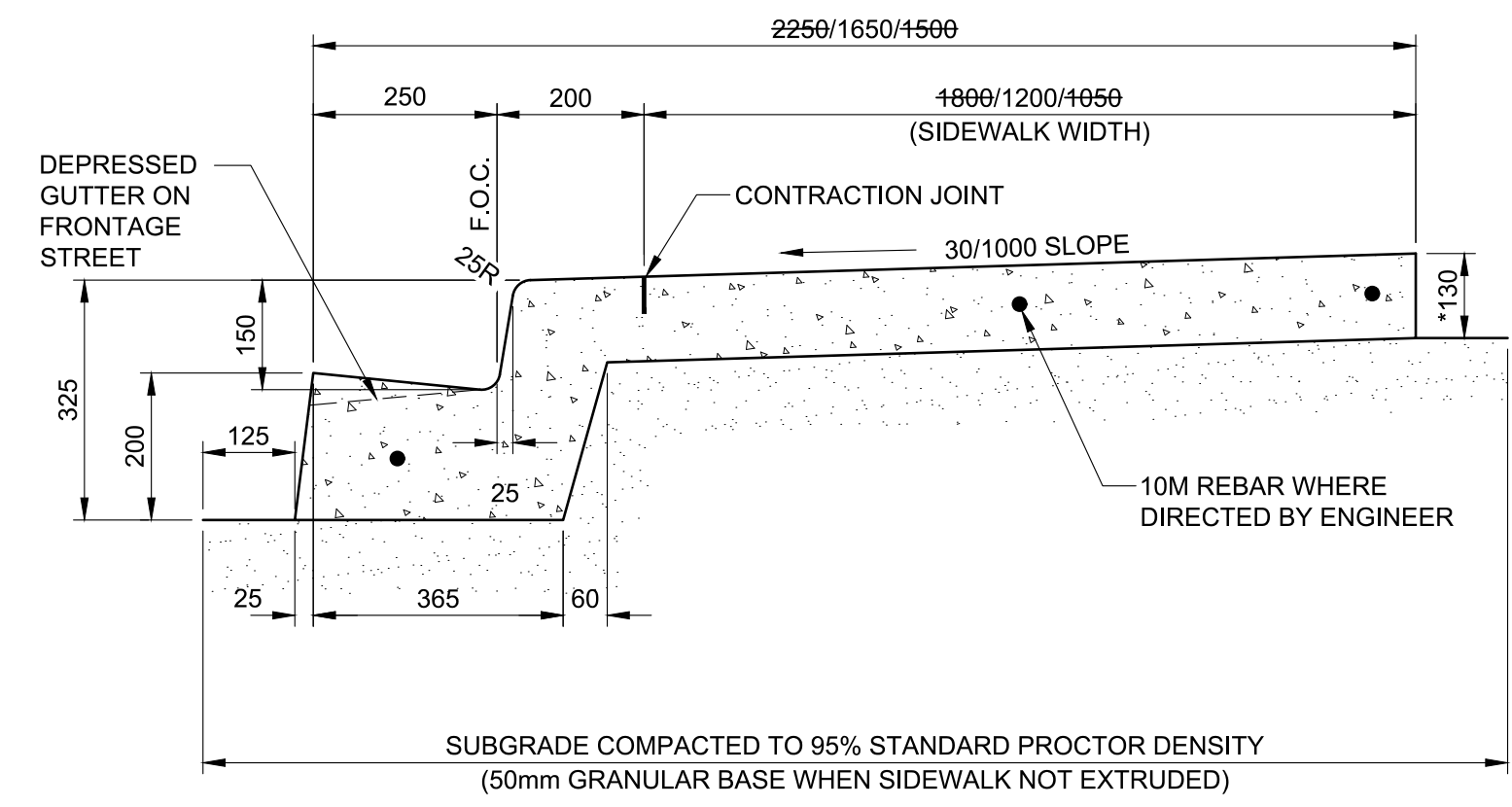
1ST STREET EAST LANE ACCESS
 Scale 1:200



5TH AVENUE EAST DRIVEWAY ACCESS
 Scale 1:200



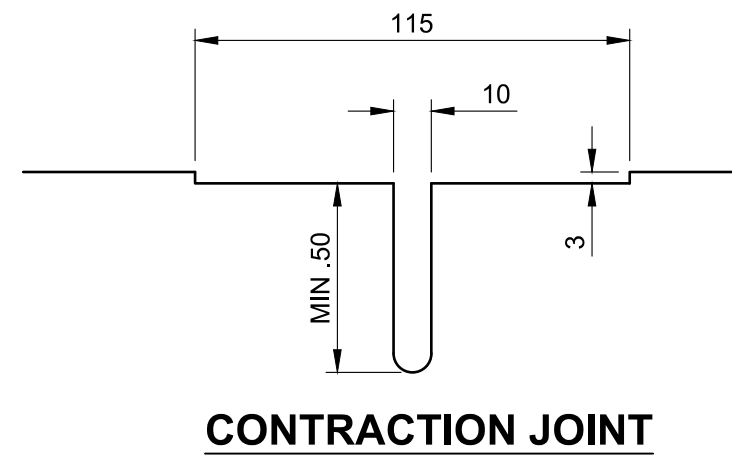
This drawing has been prepared for the use of AECOM's client and may not be used, reproduced or relied upon by third parties, except as agreed by AECOM and its client, as required by law or for use by governmental reviewing agencies. AECOM accepts no responsibility, and denies any liability whatsoever, to any party that modifies this drawing without AECOM's express written consent. All measurements must be obtained from stated dimensions.



* 180mm AT LANE & COMMERCIAL CROSSING (SEE DETAIL ROLLED CURB AND SIDEWALK CROSSING)

1 | MONOLITHIC SIDEWALK, VERTICAL CURB AND GUTTER

NTS



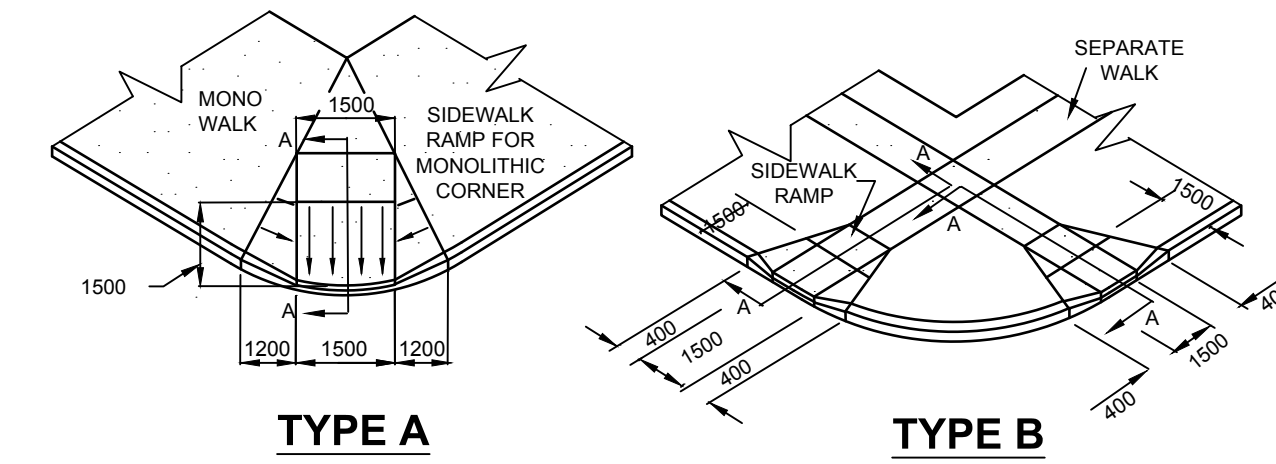
CONTRACTION JOINT

NOTES:

1. DOWELS TO BE PLACED 200 MM O.C. WHERE CONCRETE IS CASTED AGAINST EXISTING CURB OR SIDEWALK
2. DOWEL EMBEDMENT SHALL BE MINIMUM 200 mm.
3. REBAR TO BE STAINLESS STEEL, EPOXY COATED, OR GALVANIZED. (EPOXY CANNOT BE DRIVEN)
4. PROVIDE CONTROL JOINTS EVERY 1500 mm TO MATCH CONTROL JOINTS OF EXISTING CURBING

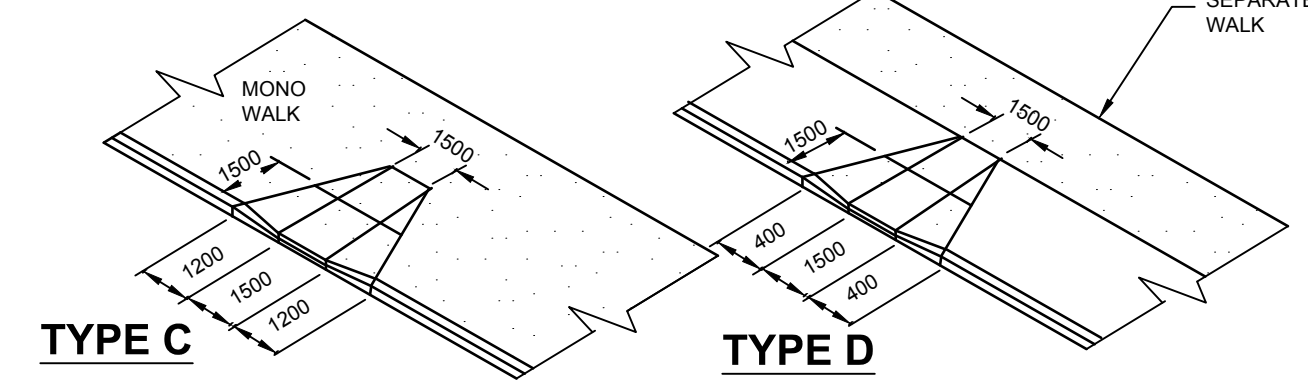
NOTE:

1. WHERE RAMP IS TO BE USED AS A TRANSITION, USE THE CENTRE OF THE 1500mm RAMP AS THE CENTRE OF THE TRANSITION.
2. WHERE CURB FACE IS 200mm, DISTANCE OF FLARE SHOULD BE 1600mm.
3. CURBS AND RAMPS TO BE POURED MONOLITHICALLY.
4. CONSTRUCTION JOINT REQUIRED AT EACH SIDE OF RAMP.
5. ALL DIMENSIONS IN MILLIMETRES UNLESS OTHERWISE NOTED.



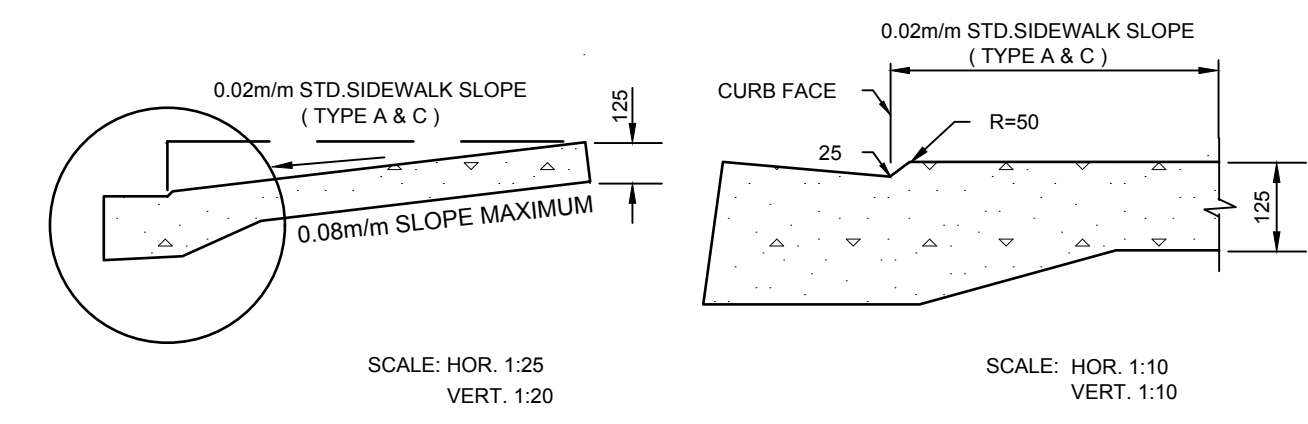
TYPE A

TYPE B



TYPE C

TYPE D

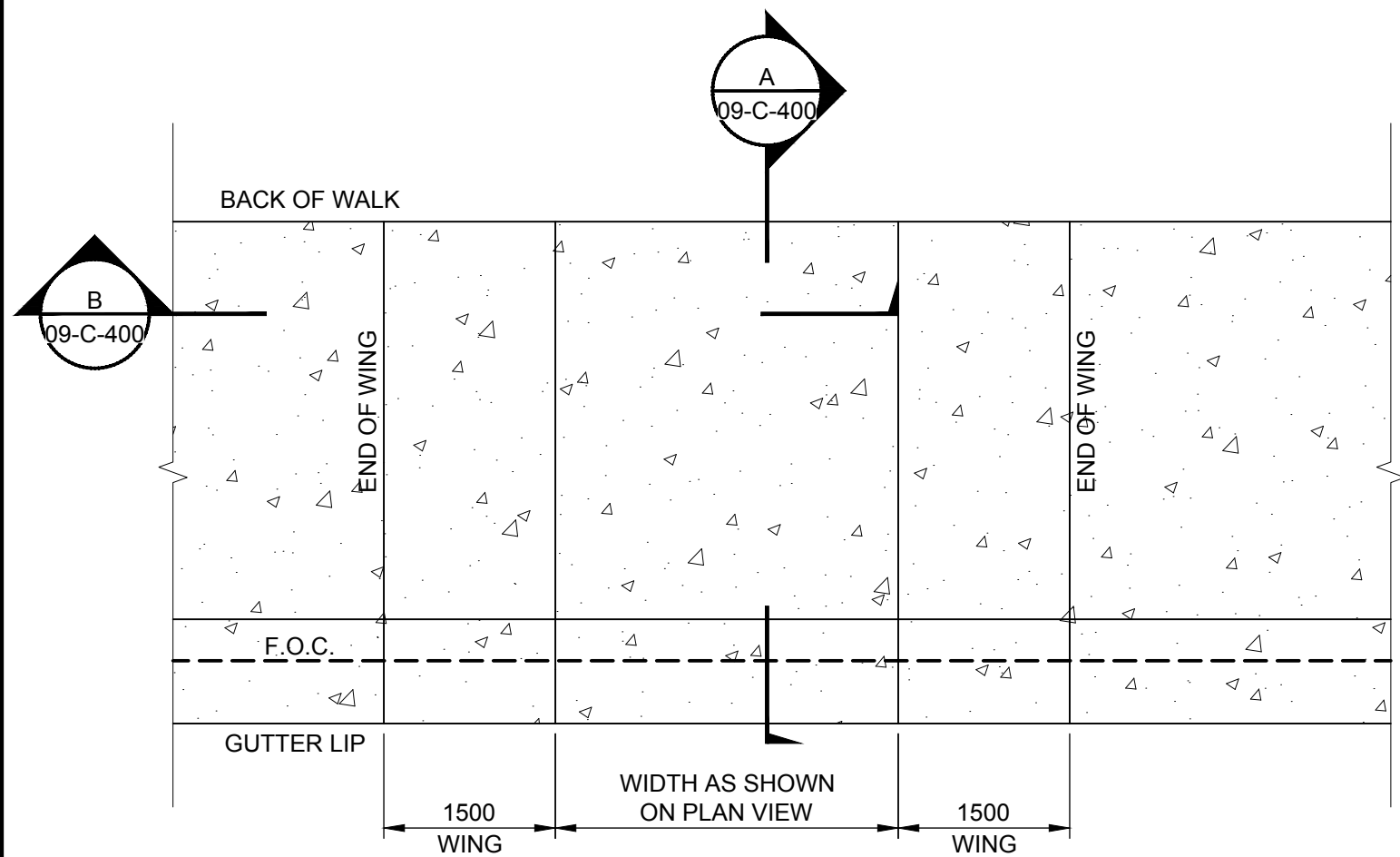


SCALE: HOR. 1:25
VERT. 1:20

SCALE: HOR. 1:10
VERT. 1:10

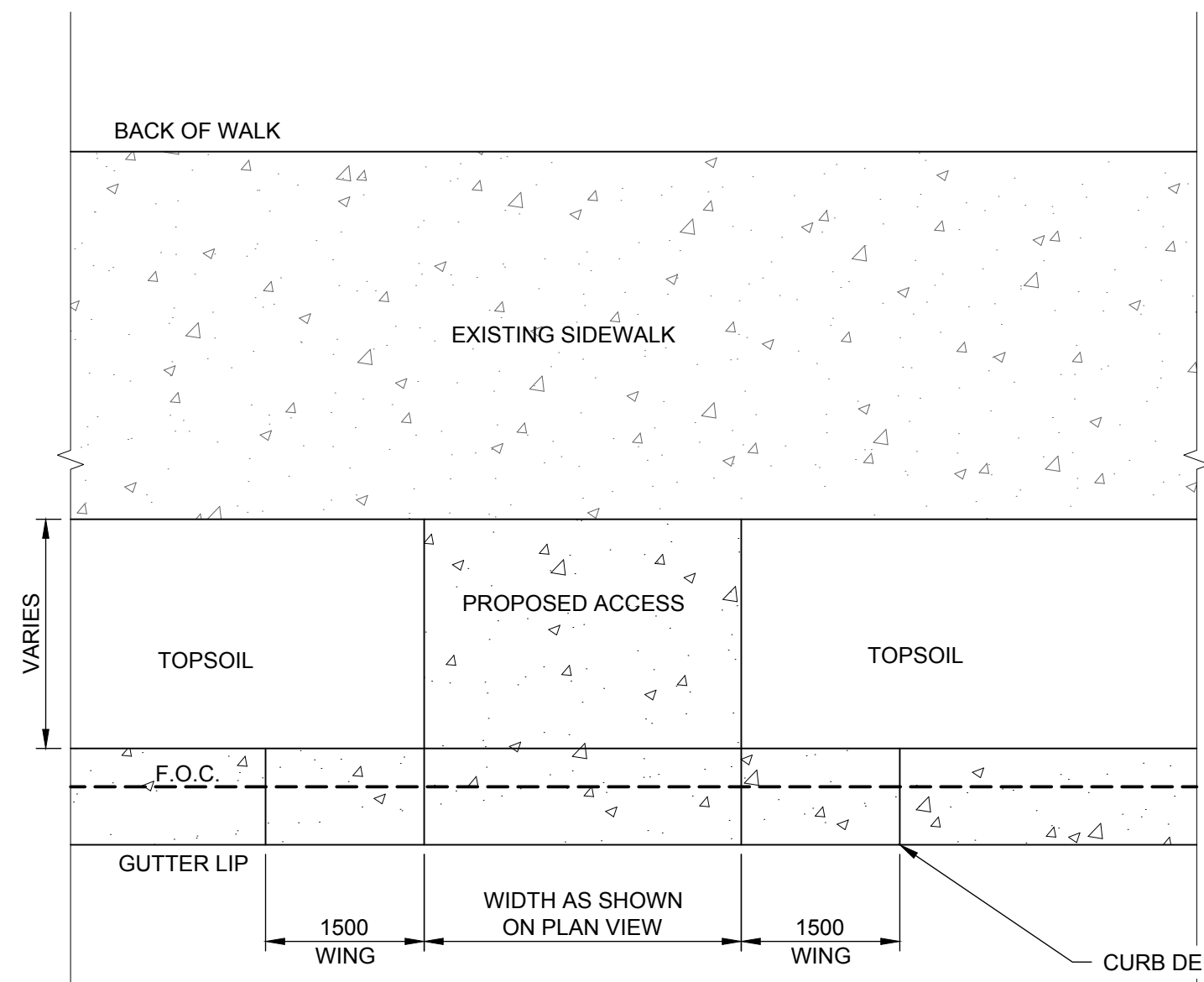
4 | RAMP - WHEEL CHAIR AND BIKE

SCALE NTS



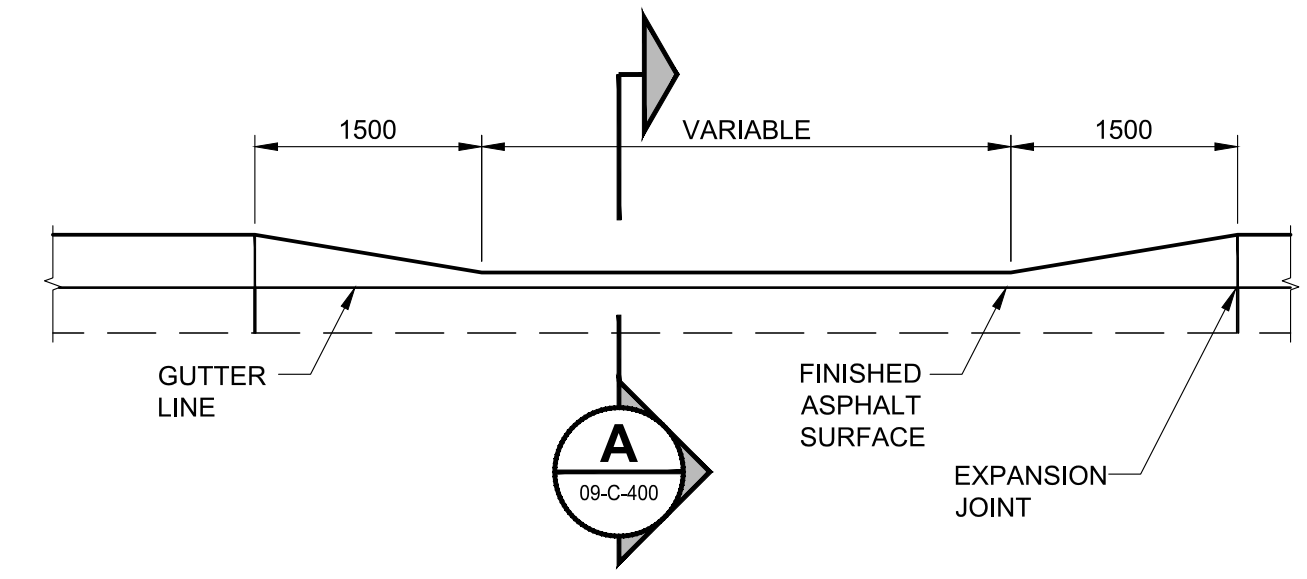
2 | VERTICAL CURB AND SIDEWALK CROSSING MONOLITHIC

Scale: NTS



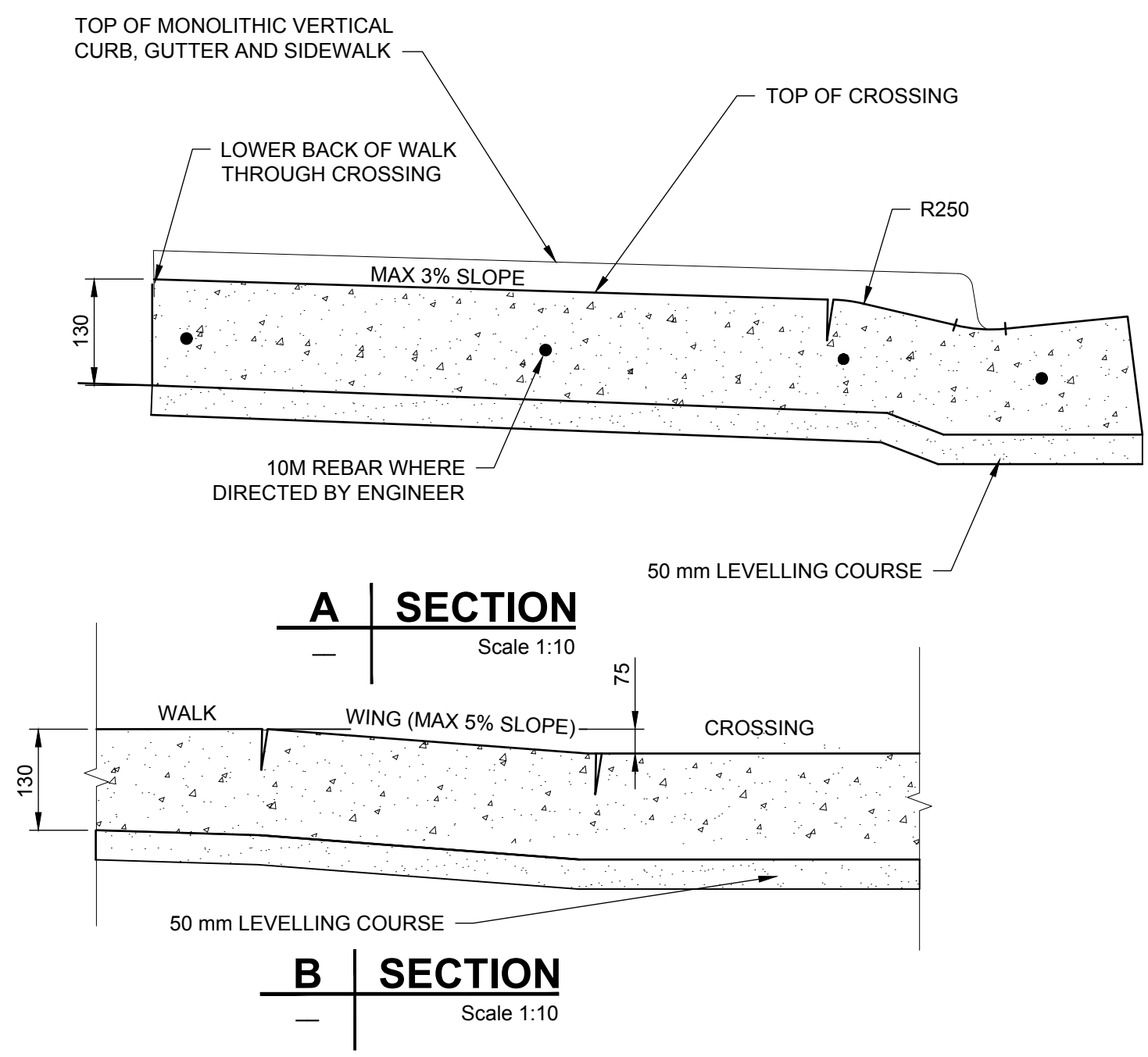
3 | VERTICAL CURB AND SEPARATE SIDEWALK ACCESS

Scale: NTS



5 | CURB DEPRESSION

SCALE NTS

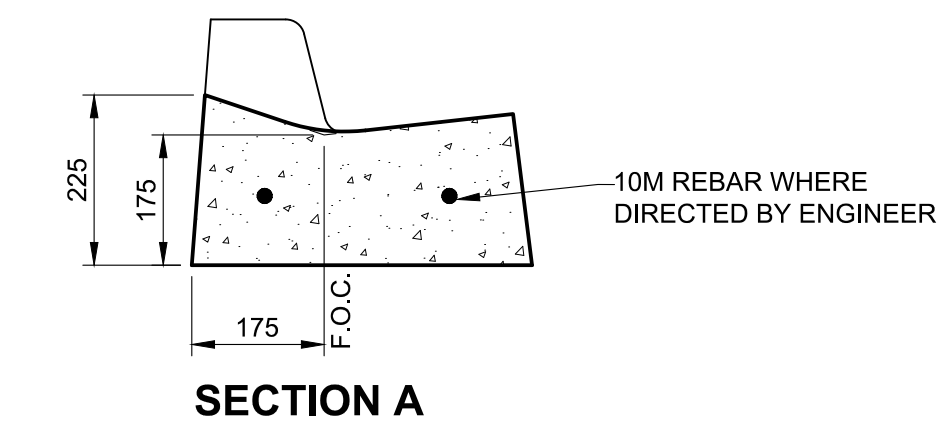


A | SECTION

Scale 1:10

B | SECTION

Scale 1:10



SECTION A

PROJECT

Local Curb, Gutter, and Sidewalk Works

CLIENT

Town Of Kindersley

106 - 5th Avenue East
Kindersley, SK
S0L 1S0

CONSULTANT

AECOM
200-2100 8th Street East
Saskatoon, SK S7H 0V1
306.955.3300 tel 306.955.0044 fax
www.aecom.com

NOT FOR CONSTRUCTION

NOTICE: THE EXISTENCE, LOCATION AND ELEVATION OF UTILITIES AND/OR CONCEALED STRUCTURES AT THE PROJECT SITE ARE NOT GUARANTEED BY AECOM CANADA LTD.

THE CONTRACTOR IS RESPONSIBLE FOR DETERMINING THE EXISTENCE, LOCATION AND ELEVATION OF ALL SUCH UTILITIES AND/OR STRUCTURES AND IS RESPONSIBLE FOR NOTIFYING THE APPROPRIATE COMPANY, DEPARTMENT OR PERSON(S) OF ITS INTENTION TO CARRY OUT ITS OPERATIONS.

REGISTRATION

ISSUE/REVISION

I/R	DATE	DESCRIPTION
B	2024-04-04	Issued For Bid
A	2023-11-02	Issued For Review

PROJECT NUMBER

60561867

SHEET TITLE

Details

SHEET NUMBER

09-C-400

This drawing has been prepared for the use of AECOM's client and may not be used, reproduced or relied upon by third parties, except as agreed by AECOM and its client, as required by law or for use by governmental reviewing agencies. AECOM accepts no responsibility, and denies any liability whatsoever, to any party that modifies this drawing without AECOM's express written consent. Do not scale this document. All measurements must be obtained from stated dimensions.