

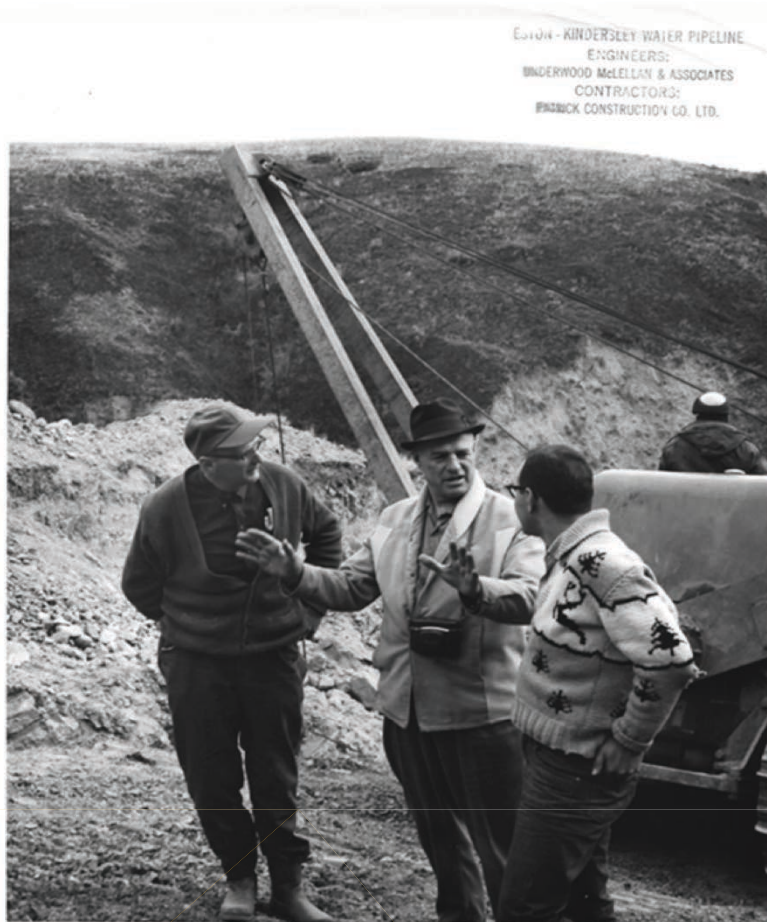
WATER WEST PROJECT

FROM THE SOUTH SASKATCHEWAN RIVER TO
YOUR TAP... WE TREAT WATER RIGHT!

HISTORY OF A
REGIONAL PARTNERSHIP



IN THE BEGINNING...



1955:

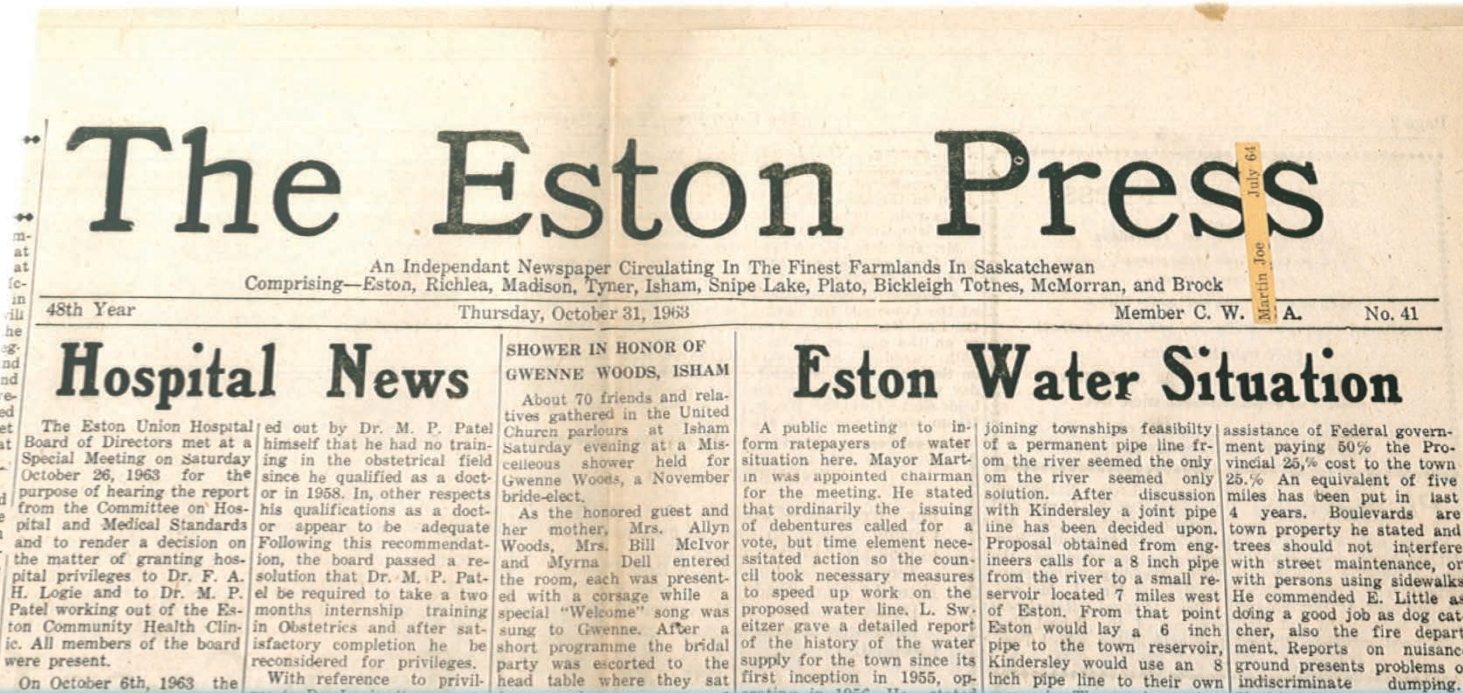
Eston installs water, sewer and natural gas services for its 1,700 residents

The water is supplied from a natural reservoir west of town and it is thought that the “slough” will meet the town’s needs

The initial consumption is 20 million gallons

Shortly thereafter, the area experiences years of drought, draining sloughs and all other local water supplies

The water from Snipe Lake is too mineralized to be utilized as a water source





South Saskatchewan River

Fall of 1960:

**Water is pumped from
the South
Saskatchewan River
overland to Eston.**

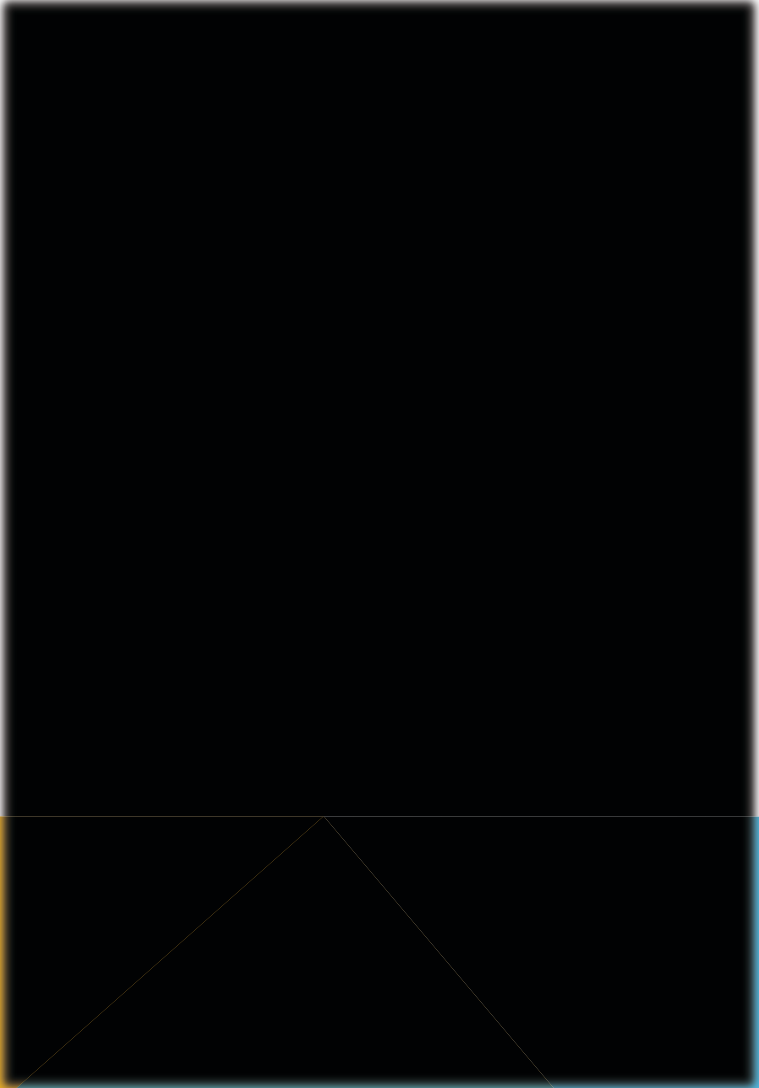
November 1961:

**The Town of Eston calls a meeting
to discuss regional water supply**

**Representatives from all over West
Central Saskatchewan are
invited**



A PARTNERSHIP FOR THE PIPELINE



Eston presents the concept of a water line from the South Saskatchewan River to Eston, realizing the potential to supply water to others and gain third party funding

In the end, only Eston and Kindersley joined forces





A pump house is built at the river, with a pipeline to Snipe Lake.

From that, Eston and Kindersley construct lines to their respective reservoirs.

1964: The EK water line is completed and put into operation at a cost of \$350,000, shared equally between Eston and Kindersley – the longest water line in Saskatchewan at the time!

Official opening of water supply line

(continued from page 2)

and Loreen Hintze accompanied at the piano by Rae Hamilton and on the guitar by Cheryl Rook including the haunting

'Saskatoon Saskatchewan' and "This Land Is Your Land". Speakers included Mr. J. M. Crook, Director of the newly established Water Resources

Commission, with a resume of its duties and possibilities; review of the history of the pipeline project by Councillor George Bishop of Kindersley and brief message from Father A. J. Barker of Kindersley, formerly of Eston, who pointed out that in the final analysis it is God who put the water there and who gives us this tremendous help in what we do, and said that every time we turn on the tap we should give thanks that He has given us the chance to enjoy these things He has provided for us.

Ceremonies and programs were arranged jointly by the Towns and Boards of Trade of Eston and Kindersley, with Mayor Martin of Eston chairman of the afternoon ceremonies and Mayor Halpenny of Kindersley of the evening reception and dinner at the Eston Legion Hall.

WE WISH TO

Congratulate

the Towns of

Eston and Kindersley

ON THE OFFICIAL OPENING OF
THEIR WATER SUPPLY LINE.

KEE Sheet Metal

KINDERSLEY, SASK.

Article and Congratulatory Ad in the Kindersley Clarion, 1965

1966:

The system pumps
23 million gallons
to Eston and 30
million gallons to
Kindersley



YESTERDAY AND TOMORROW

The system pumps directly from the river but sand causes high rates of wear in the pumps. As the need for increased quantities of high quality water rises and problems with direct pumping accelerate, a new pump house is planned



EK Well Field and Pump House Site

Rather than drawing
from the river directly,
the system is
changed to
“infiltration wells”

Testing confirms that a
supply well can be
installed adjacent to
the river with a shield
well located farther
back



The shield well pumps Tyner Valley water into the river while the river water flows through the sand. This results in the supply well getting mostly river water that is filtered through a sand bed, providing high quality, raw water



EK Production Wells Near the River and a Shield Well into Tyner Valley Aquifer

YESTERDAY AND TOMORROW



A new pump house is built and the three original supply wells are replaced, as required, by new wells located in the same area

This system, built in cooperation with the Town of Kindersley and the PFRA, is completed in 1985

North Pump House for Kindersley

**The cost for the system is shared - 25% by Eston
and 70% by Kindersley - based on their water
consumption**



Snipe Lake Reservoir

2001:

Discussions begin for a regional pipeline that could supply water as far North as Denzil

At the same time, the 1985 pump house is rapidly nearing the end of its life; a decision is required for its repair or replacement



Inside the new EK pump house, 2004

WELCOME TO THE FUTURE

WELCOME TO THE FUTURE

EK decides to replace the existing pump house
The building is built with expectations of
expansion



Inside the new EK pump house, 2004

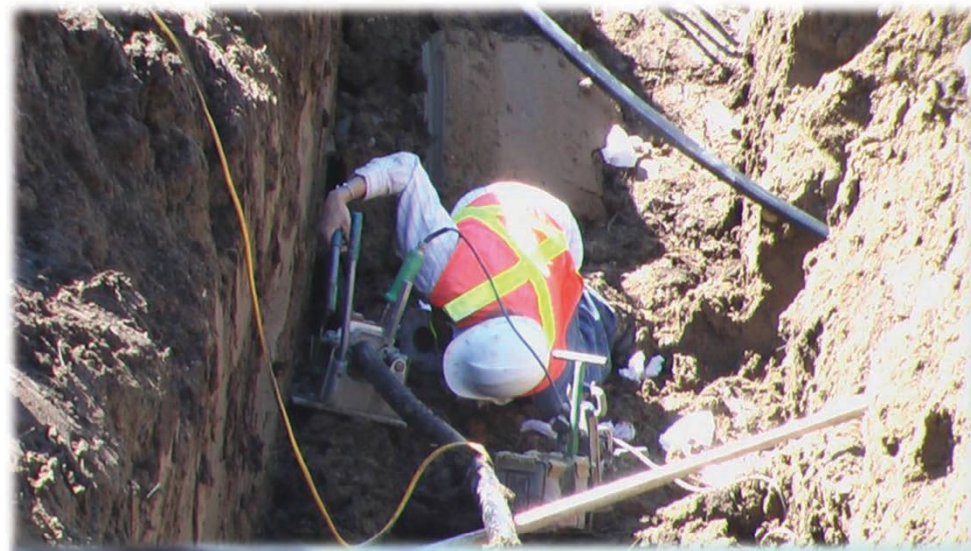


The price of construction is split between Kindersley and Eston based on anticipated water consumption

New Pump House, 2004



EK Pipeline Route from the River



**With more progress comes the need to increase the amount of water into the Snipe Lake reservoir and to the Town of Kindersley
This results in the 2012 Water West Project**

WELCOME TO THE FUTURE



Several upgrades are completed with the assistance of Western Economic Development under the Water West Pipeline utility



The design includes the potential to supply a rural line to the RM of Newcombe and the RM of Chesterfield

If more capacity is required in the future, there can be additional pipe replacement both from the river to Snipe Lake and from Snipe Lake to Kindersley

WELCOME TO THE FUTURE

THE RIGHT PLACE

Tyner Valley Aquifer, being located in the pump house location at a depth that provided for infiltration wells, was a key to the success of the Water West line

Later investigation shows that only 6 miles east, land is unsuitable for the use of the infiltration wells



EK Production Wells Near the River and a Shield Well into Tyner Valley Aquifer

THE RIGHT TIME

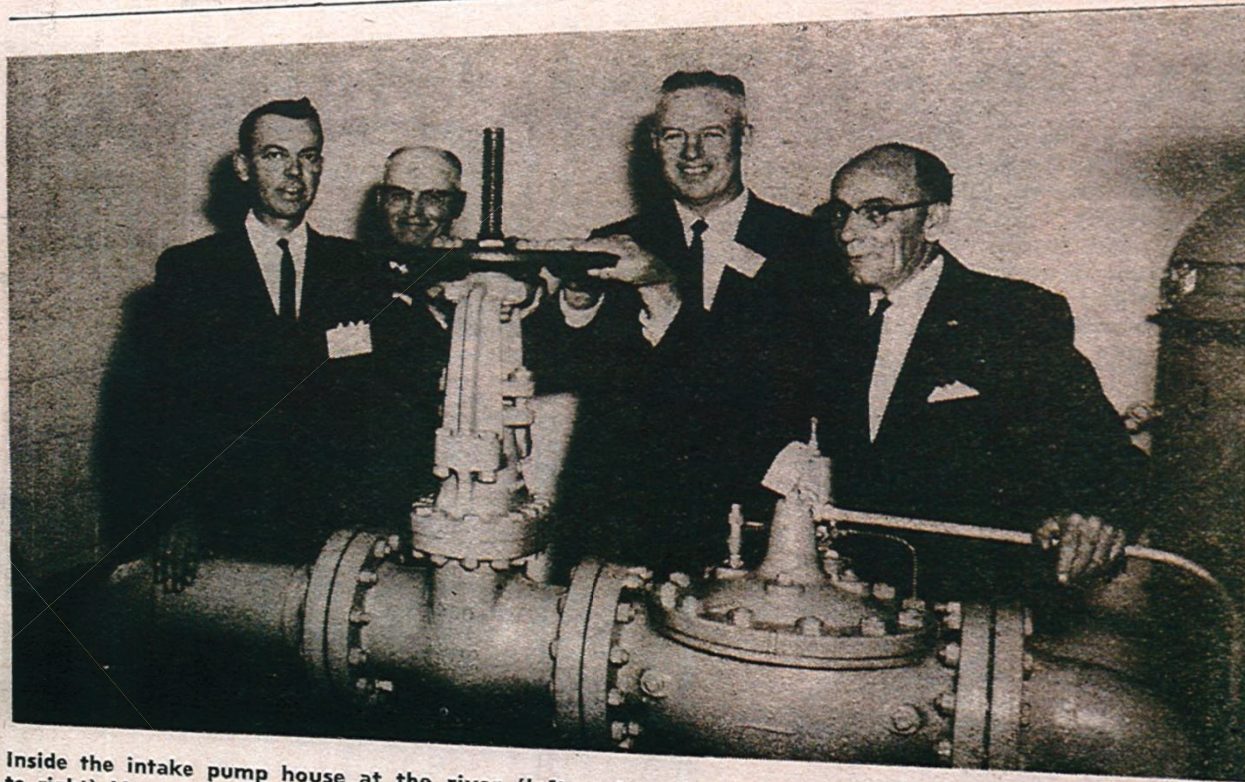
Kindersley's new water tower, completed in 2009, holds 726,000 gallons, increasing the capacity of the old water tower by more than 4 times.

More than 800,000 gallons of water was used to fight the Exhibition Stadium fire in January 2010.



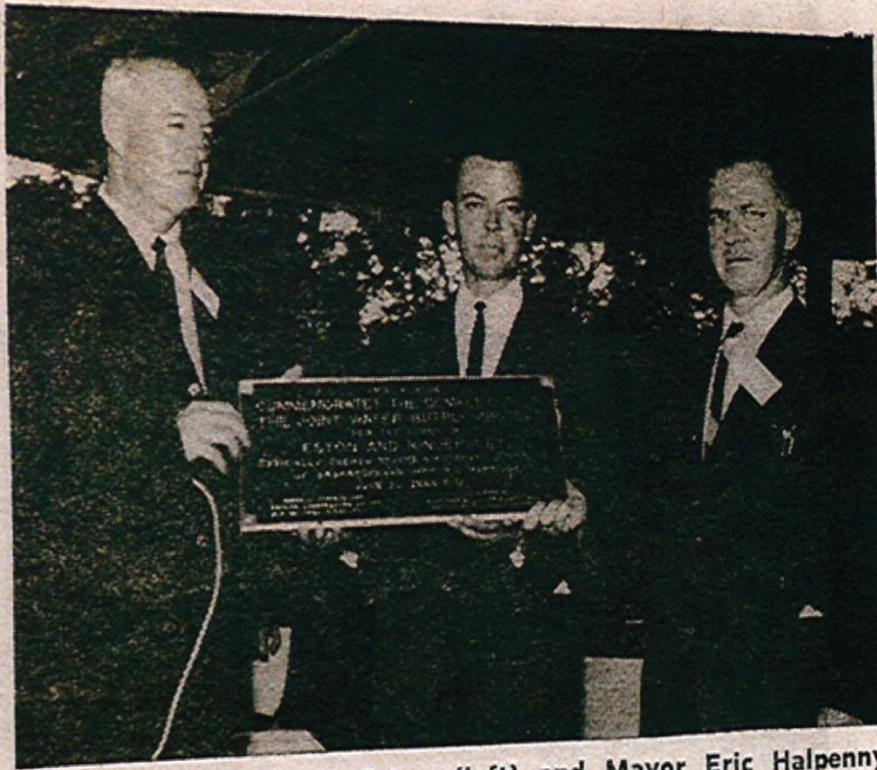
**“TOMORROW BELONGS TO
THOSE WHO PREPARE FOR IT
TODAY” – MALCOLM X**

PAGE 2 THE KINDERSLEY (Sask.) CLARION
Wednesday, June 9, 1965.



Inside the intake pump house at the river (left to right) Mayor E. Halpenny, Kindersley; Water Commissioner L. Sweitzer and Mayor J. Martin

of Eston; and Water Commissioner George Bishop at official opening ceremonies for the Eston-Kindersley water line. —James Photo Service



Mayor Joe Martin of Eston (left) and Mayor Eric Halpenny (centre) accepting plaque commemorating completion of the joint water supply project from H. Klassen, representing Underwood, McLellan and Associates. Plaque will be placed at the pump house at the Snipe Lake reservoir. —Knox Photography.

The vision and determination of the Town Councils in both Eston and Kindersley those many years ago has made an abundant water supply possible today

2012 WATER WEST PROJECT



**“BY WORKING TOGETHER,
POOLING OUR RESOURCES
AND BUILDING ON OUR
STRENGTHS, WE CAN
ACCOMPLISH GREAT
THINGS.”**



-ISAAC NEWTON

