



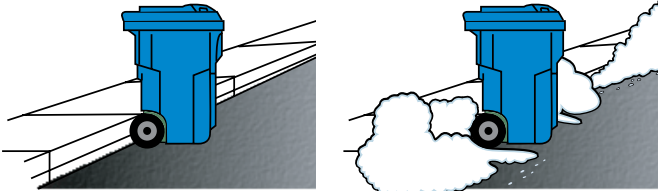
General Guidelines for Curbside Recycling

- Cart lids must be completely closed for safety to surrounding property and prevention of windblown materials. Over-filled carts with open lids may not be emptied
- Place your cart with wheels against the curb by 7:00 am on collection day
- Use your roll-out cart for the storage and collection of approved recyclables only
- Please do not bag or tie your recyclables except plastic bags and shredded paper
- Return your empty cart to your property before the end of collection day
- In the event of severe weather, please leave your cart curbside. Our trucks will provide service as soon as possible after conditions have cleared
- Do not remove your cart from its assigned address
- Do not paint or mark your cart
- Please inform Loraas Environmental of any damage, vandalism, or theft of your cart; replacement carts are at the homeowner's cost

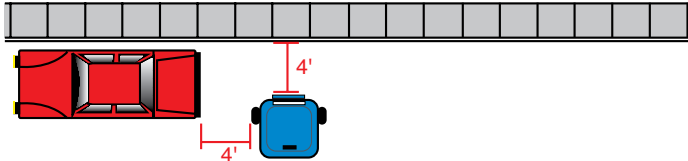
For your child's safety, do not allow them to play near the collection containers or vehicles

By following these instructions, you will assist in making your community one of the cleanest and greenest in Saskatchewan!

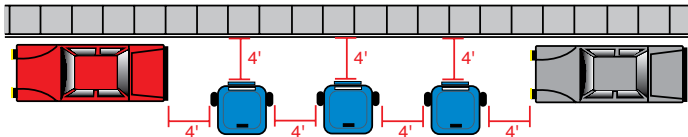
Ideal Location #1 Snow Bank #2



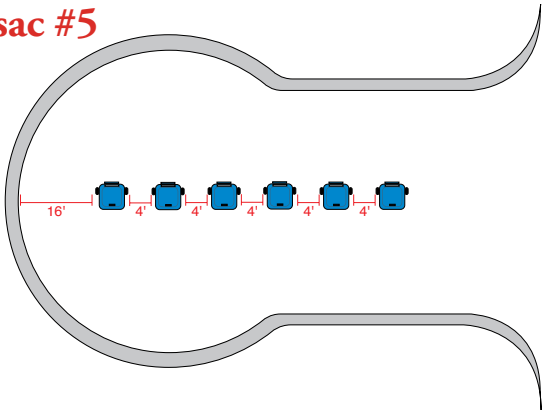
Close to a Parked Car or Other Obstructions #3



Between Two Parked Cars #4



Cul-de-sac #5



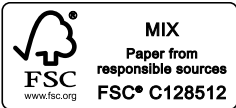
1-888-LORAAS1

Kindersley, SK
(306) 463-2008

North Battleford, SK
(306) 445-390

Prince Albert, SK
(306) 763-6800

Doing More to Create Less for You.



Residential Single Stream Recycling

We Are Doing More to Create Less



Why Single Stream Recycling?

A single stream recycling program is the easiest and most effective way to show your commitment to the environment. With a single stream program, all recyclable materials can be placed into your blue bin together—no more sorting or separating required! By this simple action, you are helping to divert over 50% of your household waste from the landfill! Single stream recycling keeps our community clean, green, and ensures a vibrant and sustainable future for generations to come.



Single Stream: How does it work?

Single stream recycling is made possible by Loraas Recycle's state-of-the-art Materials Recovery Facility (MRF). Using cutting edge technology, recyclable materials are sorted through a process of mechanical separation and manned quality control stations. This efficient system allows for an extremely high rate of recovery — Loraas Recycle's MRF processes more than 100 tonnes of recycle material per day! See how it works at www.loraas.ca/recycle.



What goes in the cart?

Please show your commitment to recycling by placing only the listed items in your blue cart. Our trucks employ a sophisticated camera system to monitor your cart contents. Carts containing unacceptable items will be left curbside or rejected from the collection program. Loraas Recycle appreciates your cooperation!

BEVERAGE CONTAINERS: (please rinse and remove lids)

- Aluminum pop and beer cans
- Plastic pop/water bottles, plastic milk jugs
- Milk cartons, juice boxes, and all Tetra-pak containers



METAL: (please rinse)

- Aluminum cans, trays, pie plates, and foil
- Household tin cans (food, beverage, soup, etc.)



Not accepted: wire hangers, scrap metals, banding, propane tanks, helium tanks, gas cans, auto parts, batteries, hazardous chemical containers, glass bottles and jars.



What goes in the cart?

PLASTIC:

(please rinse and remove lids)

- All household plastics labeled with any (#1–#7) symbol. Container must have a numbered arrow symbol in order to be recycled.

Some examples include: pop/water bottles, shampoo bottles, liquid detergent jugs, milk jugs, vinegar bottles, yogurt and margarine containers, spray bottles, windshield washer fluid jugs, etc.

- Plastic bags: grocery, retail, dry cleaning, bread bags, etc. Please place all plastic bags inside another bag and tie shut.



Look for these #'s



OK for recycling.

Not accepted: styrofoam, plastic toys, Tupperware, plastic pipe, outdoor lawn furniture, containers without a #1–#7 symbol, used oil containers or biohazardous material.



What goes in the cart?

PAPER FIBER MATERIALS:

(paper, cardboard, paperboard)

- Newsprint, flyers, junk mail, and envelopes (with or without windows)
- Letter quality paper, copier paper, computer printouts, NCR paper (no carbon required)
- Shredded paper (please place in clear plastic bag and tie shut)
- Non-metallic gift wrap and packing paper
- Magazines, catalogues, paperback books, telephone books
- Hardcover books (cover and spine must be removed)
- Paper egg cartons
- Brown paper bags
- Tissue and paper towel cores
- Flattened cardboard and paperboard boxes



Not accepted: any fiber material that is waxed or plasticized; any material that is food contaminated (ie: a greasy pizza box with cheese stuck on it); soiled tissues, napkins and paper towels; confetti paper; heavily dyed or coloured construction paper.